

2021

Transition Days Highlighted

JANUARY

Su	Mo	Tu	We	Th	Fr	Sa
					1	2
3	4	5	6	7	8	9
10	11	12	13	14	15	16
17	18	19	20	21	22	23
24	25	26	27	28	29	30
31						

FEBRUARY

Su	Mo	Tu	We	Th	Fr	Sa
	1	2	3	4	5	6
7	8	9	10	11	12	13
14	15	16	17	18	19	20
21	22	23	24	25	26	27
28						

MARCH

Su	Mo	Tu	We	Th	Fr	Sa
	1	2	3	4	5	6
7	8	9	10	11	12	13
14	15	16	17	18	19	20
21	22	23	24	25	26	27
28	29	30	31			

APRIL

Su	Mo	Tu	We	Th	Fr	Sa
				1	2	3
4	5	6	7	8	9	10
11	12	13	14	15	16	17
18	19	20	21	22	23	24
25	26	27	28	29	30	

MAY

Su	Mo	Tu	We	Th	Fr	Sa
						1
2	3	4	5	6	7	8
9	10	11	12	13	14	15
16	17	18	19	20	21	22
23	24	25	26	27	28	29
30	31					

JUNE

Su	Mo	Tu	We	Th	Fr	Sa
		1	2	3	4	5
6	7	8	9	10	11	12
13	14	15	16	17	18	19
20	21	22	23	24	25	26
27	28	29	30			

JULY

Su	Mo	Tu	We	Th	Fr	Sa
				1	2	3
4	5	6	7	8	9	10
11	12	13	14	15	16	17
18	19	20	21	22	23	24
25	26	27	28	29	30	31

AUGUST

Su	Mo	Tu	We	Th	Fr	Sa
1	2	3	4	5	6	7
8	9	10	11	12	13	14
15	16	17	18	19	20	21
22	23	24	25	26	27	28
29	30	31				

SEPTEMBER

Su	Mo	Tu	We	Th	Fr	Sa
			1	2	3	4
5	6	7	8	9	10	11
12	13	14	15	16	17	18
19	20	21	22	23	24	25
26	27	28	29	30		

OCTOBER

Su	Mo	Tu	We	Th	Fr	Sa
					1	2
3	4	5	6	7	8	9
10	11	12	13	14	15	16
17	18	19	20	21	22	23
24	25	26	27	28	29	30
31						

NOVEMBER

Su	Mo	Tu	We	Th	Fr	Sa
	1	2	3	4	5	6
7	8	9	10	11	12	13
14	15	16	17	18	19	20
21	22	23	24	25	26	27
28	29	30				

DECEMBER

Su	Mo	Tu	We	Th	Fr	Sa
			1	2	3	4
5	6	7	8	9	10	11
12	13	14	15	16	17	18
19	20	21	22	23	24	25
26	27	28	29	30	31	

DANNEVIRKE SOUTH SCHOOL

Transition Programme



“The sparkle in the five-year-old eyes when they start school must be sustained”

Deputy Principal of a large urban primary school

DANNEVIRKE SOUTH SCHOOL

Transition Programme

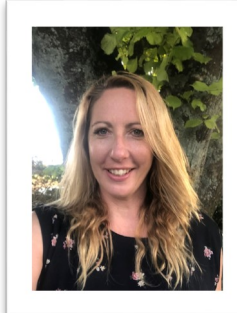
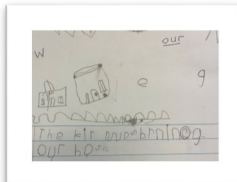


How It Works!

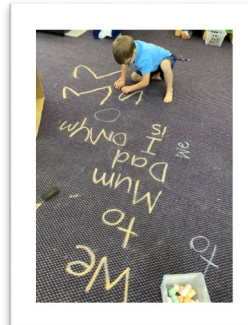
- Four Year olds will be given the opportunity to spend up to 10 weeks transitioning to Dannevirke South School.
- The Transition Programme will take place on Tuesday or Thursday mornings. (Alternating weeks)
- Four year olds come to school with their parents from 9am to 11am.
- Students will engage in our classrooms play based setting.
- You and your child will also have the opportunity to get to know your way around the school. You will meet other parents who will be joining the South School community at a similar time to you.



Miss Jenna Hutchings
New Entrants Teacher
Assistant Principal



Mrs Jamie Geurtjens
New Entrants Teacher



Jenna and Jamie will...

- ⇒ Build strong relationships with Early Childhood services.
- ⇒ Use early childhood records of learning and interviews to get to know your child.
- ⇒ Spend time with your child in their ECE service before they start school.
- ⇒ Get to know your child's culture, background, interests, strengths, and what they've already learnt (and using this to tailor their learning).
- ⇒ Set up a tuakana/teina (buddy system) for your child before they start school.

Other Information...

- ◆ Your child will engage in a 'play based learning setting. You will learn more about this through discussion with teacher on visits.
- ◆ From the beginning of 2021 all children will be provided with free school lunches.
- ◆ Stationery is available from the school office and can be purchased before your child starts school. This will last for their first year of school.
- ◆ School Uniforms can be purchased at 'The Warehouse' Dannevirke.

"Transition to school from an early childhood service is a critical time for children as it sets them on their learning pathway for life."

- Education Review Office 2015