

PRINCIPAL’S COMMENT

Kia ora whānau,

Big thank you for Friday!

Friday's afternoon weather was.....eventful. While the hail was pounding and the rain pouring I was SO impressed and thankful for our community. Drivers were calm, considerate and all stopped when we stood in the middle of the road asking for children to cross. It reminded me again of how supportive and kind you all are - thank you!

Kapa Haka Festival

Our amazing Kapa Haka rōpū (group) are working so hard to get ready for the festival on Tuesday 16th September at the Hub. We are performing in the afternoon and we would love you to come and watch.

School Board of Trustees voting

It is really important for our Board (BoT) to reflect the width and depth of our community. This will only occur if as many of our whānau vote as possible. All the information has been sent to your emails (as the link is specific to the email address you gave school). Please do vote- it only takes a few minutes but has a massive impact on the direction of the school for the next 3 years.

Thanks,
Caroline



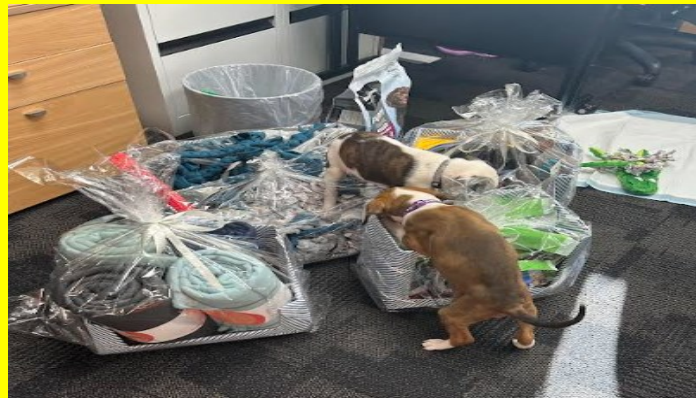
CALENDAR

DATE 2025	EVENT
Tue 9 Sept	Wearable Arts in the School Hall 11.30am
Tue 16 Sep	Kapa Haka Festival
Thur 18 Sep	Keep NZ Beautiful
Fri 19 Sept	Term 3 Ends
Mon 6 Oct	Term 4 Begins

THE POUND PUPPY PROJECT



The Animal Control team, who run The Pound Puppy Project, is based at the Dannevirke Dog Pound. They take care of dogs and other animals that come into the pound. They are looked after until they can be with their families or new, loving homes are found. They collaborate with dog rescue groups across the country to help pound pups find forever homes. Some of our students along with their buddy classes made a variety of rope toys for this project. We then invited the team at Animal Control to join us at our assembly and our student leaders had the chance to tell the whole school about their important role in our community. We were also able to hand over a few hampers of dog toys, treats and blankets, bought with the money we raised at our mufti day. Thank you to our whānau for their donations and the time our tamariki took to give back to this wonderful organisation.



REMINDERS

- ⇒ DSS Dental Clinic ph 0800825583
- ⇒ Follow us on Facebook



COMMUNITY NOTICES

Te Tipu Attendance Rewards

In Te Tipu, we’ve been celebrating the dedication of our tamariki who attend school every day. Each Friday, students record the days they’ve been present during the week, then calculate both the percentage and ratio of their attendance. To recognise their efforts, we draw one lucky student’s name from a hat, and the winner gets to choose a prize from Mrs Jackson’s treasure trove! This initiative has been working extremely well, and we’re excited to see more students aiming for 100% attendance in the coming weeks and throughout Term 4. Pictured are the winners of our attendance draw.

Explanation Writing in Te Kākano!

Te Kākano tamariki have been learning how to write explanations. We have looked at exemplars and identified the important parts of good explanations. We have learnt more about stick insects, camouflage and how ice cream and honey is made through our writing. Here are some examples of our Ice Cream explanations:

How is ice cream made?

Do you like ice cream? Do you know New Zealanders eat 28.4 litres of ice cream? Do you know that you have to milk cows because you have milk in ice cream? Your milk gets delivered to the factory. The machines make the ice cream. First you put sugar and milk together. Then it gets heated to kill any germs. It gets put in boxes and it gets put in the freezer to get hard. In conclusion milk is made sweet and flavoured to make ice cream using heating and freezing. There’s lots of different ice cream to choose. What is your favourite? - Carlo

How is ice cream made?

Did you know how to make ice cream? In New Zealand we eat the most ice cream, we eat 28.4 litres. Do you know how to make ice cream? People get the milk from cows and then we bring the milk to the factory to make ice cream, and they make ice cream from scratch at the factory. They put the milk into the sugar. Now we put the ice cream in the microwave so we can kill the germs. Now we need to mix in flavour so it is good. Freeze it so it is cold. We should bring it to New World to sell it. In conclusion, we should always eat ice cream. - Kasey

Blended Family Success

1-DAY WORKSHOP FOR COUPLES NAVIGATING STEPFAMILY LIFE

This course had GLOWING REVIEWS from the 2024 delivery!

“Already implementing what we learned”
“Absolutely amazing! Thank you, Mike and Adele”
“Engaging and well put together”

Discover how your blended family can adjust to stepfamily life, deal with common issues and create a happy home.

- Learn skills and strategies to enjoy great relationships.
- Learn how to form a united approach to discipline.
- Make progress in resolving issues.

You will be inspired and equipped with practical strategies that work!

Delivered by leading stepfamily presenter, Adele Cornish and her husband Mike. Together they have a blended family with five children

Details

- 8:30 am – 3:30 pm
- Saturday 11 October
- Tararua REAP, 15 Gordon Street
- \$40 per couple
- 50% discount for Community Service Card holders
- Lunch Provided

Contact Tararua REAP to register, or visit www.tararuareap.co.nz/courses-and-events/

TARARUA REAP

Rural Education Activities Programme

15 Gordon Street, Dannevirke
06 374 6565
office@tararuareap.co.nz
www.tararuareap.co.nz

KEEP NZ BEAUTIFUL WEEK 2025

Thursday 18 September 2025

Our students will be out and about picking up rubbish near our school

South students will be giving back to the community

Give us a wave to show your support